



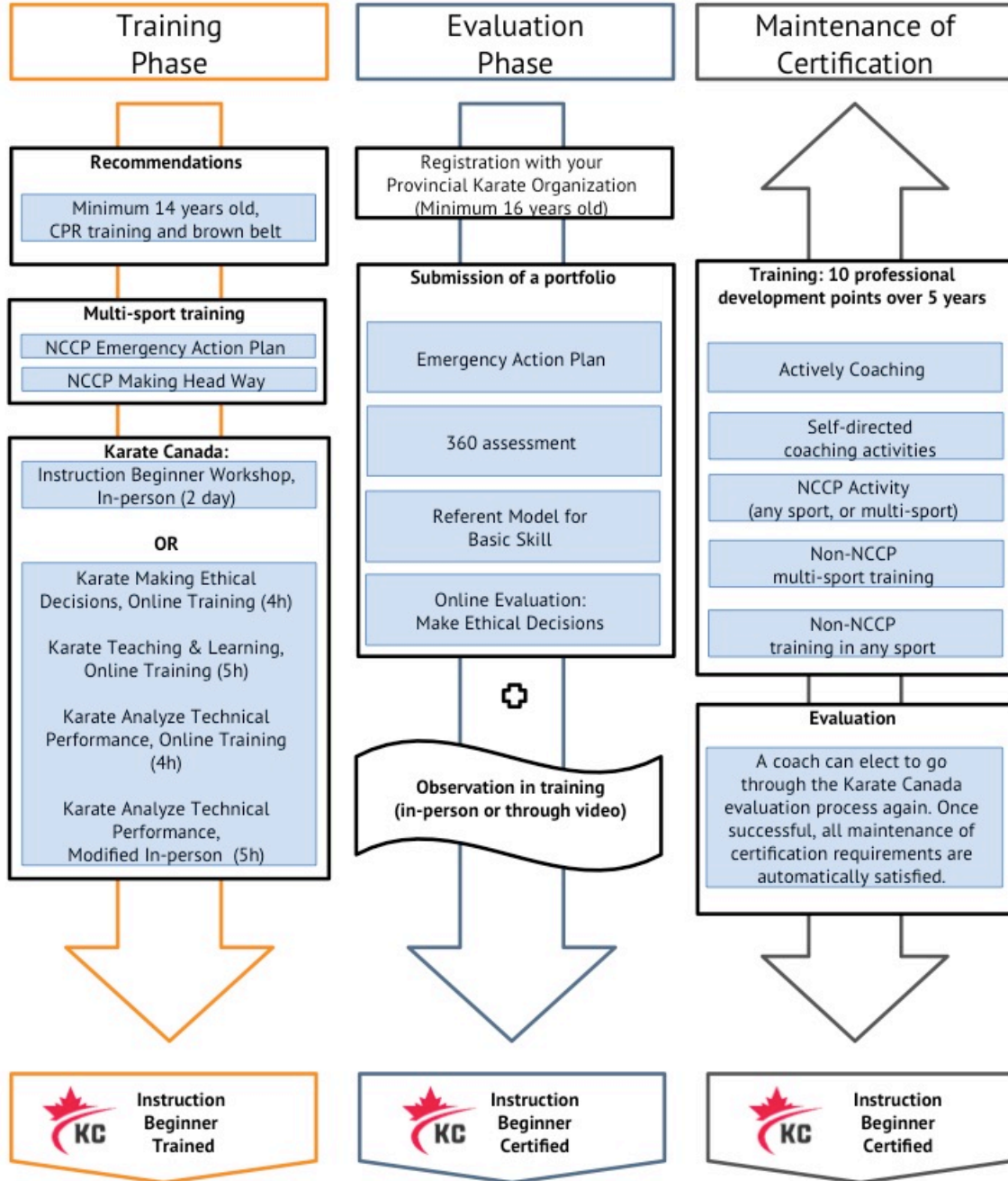
**INSTRUCTION BEGINNER**  
**Revisions and Online Workshop**  
**October 14<sup>th</sup>, 2020**

The NCCP Instruction Beginner (IB) workshop has recently been revised and adapted for online delivery. Please find some important information to help PTSOs continue to offer and manage the program within their Province/Territory. This information will be reflected in the updated version of the Karate Canada NCCP Operation Manual, but until then, please follow the guidelines below for anything pertaining to IB.

The updated version of the IB pathway can be found below. You will notice 3 changes:

1. The free e-learning module Making Head Way is now required in the training phase versus the evaluation phase. Emergency Action Plan (EAP) is now a stand-alone free e-learning and is required in the training phase.
2. Planning a Practice, which used to include EAP, is now only in the Competition Introduction pathway instead of both pathways.
3. The pathway now includes an option for online delivery of the workshop. The online option is a blended approach comprised of 3 modules taught virtually and 1 modified in-person module. A coach needs to attend all 4 modules to receive the trained status.

## Instruction Beginner Pathway



## FEE STRUCTURE

Instruction Beginner	In-person						
	Member	Non-Member	Return to KC	Cost Member	Cost Non-Member	LF Honorarium	
						Trained	Certified
Emergency Action Plan	\$ -	\$ -	\$ -	\$ -	\$ -	\$ -	\$ -
Making Head Way	\$ -	\$ -	\$ -	\$ -	\$ -	\$ -	\$ -
Teaching & Learning							
Making Ethical Decisions	\$ 150	\$ 295	\$ 20	\$ 170	\$ 315	\$ 600	\$ 750
Analyze Technical Performance							
<b>Total</b>	<b>\$ 150</b>	<b>\$ 295</b>	<b>\$ 20</b>	<b>\$ 170</b>	<b>\$ 315</b>	<b>\$ 600</b>	<b>\$ 750</b>

Instruction Beginner	Online						
	Member	Non-Member	Return to KC	Cost Member	Cost Non-Member	LF Honorarium	
						Trained	Certified
Emergency Action Plan	\$ -	\$ -	\$ -	\$ -	\$ -	\$ -	\$ -
Making Head Way	\$ -	\$ -	\$ -	\$ -	\$ -	\$ -	\$ -
Teaching & Learning	\$ 45	\$ 90	\$ 5	\$ 50	\$ 95	\$ 190	\$ 240
Making Ethical Decisions	\$ 45	\$ 90	\$ 5	\$ 50	\$ 95	\$ 120	\$ 150
Analyze Technical Performance Online	\$ 20	\$ 35	\$ 5	\$ 25	\$ 40	\$ 120	\$ 150
ATP Modified In-person	\$ 40	\$ 80	\$ 5	\$ 45	\$ 85	\$ 240	\$ 300
<b>Total</b>	<b>\$ 150</b>	<b>\$ 295</b>	<b>\$ 20</b>	<b>\$ 170</b>	<b>\$ 315</b>	<b>\$ 670</b>	<b>\$ 840</b>

The in-person workshop costs are suggestions and can be adjusted by PTSOs depending on their own organization's costs (room and equipment rental, etc.).

The online workshop costs and any Learning Facilitators' honorariums must be applied as is by all PTSOs.

KC members can take online NCCP workshops from any recognized PTSOs, but it is their responsibility to send proof of their membership to the organizers as we have different prices for non-members. The organizing PTISO will collect the registration fees and will be responsible for the facilitator's honorarium. PTSOs can always limit registration to their own members if they want. Twice a year, KC will invoice PTSOs for the return fee. This fee can be charged to the participant at registration or defrayed by the PTISO when invoiced by KC.

### ONLINE WORKSHOP

The online workshop is delivered in 4 blocks of 3-4 hours (MED 4h, T&L 2 x ≈3h, ATP 4h) plus the modified in-person module (5h). Blocks can be delivered at the PTISO's convenience, but we suggest not on the same day. A maximum of 12 participants can register for each module except for the modified in-person module for which registration can go up to 20. When planning for the modified in-person module, it is the PTSOs responsibility to respect any governmental and health

regulations established within their province/territory following the COVID-19 pandemic.

Coaches can register for part of the online workshop if the scheduling allows it. For example, a coach could register only for Making Ethical Decisions if it was offered as a stand-alone online course. On the opposite, a coach may not do the same for the in-person workshop. One might not mix and match either. For example, if a coach already took Teaching and Learning online and registers for the full IB in-person workshop, there will be no fee adjustment and the coach is expected to attend the full workshop.

### **LEARNING FACILITATORS**

KC recently went through a content revision of the IB workshop. All current Learning Facilitators (LF) must follow an “update training” before they can deliver the IB workshop.

The online IB workshop can only be delivered by LFs who have been trained/certified to deliver online. This new distinction will soon be added in the Locker so one can find the information in a Coach Developer’s transcripts.

Contact [Karate Canada](#) for more information on LF training.